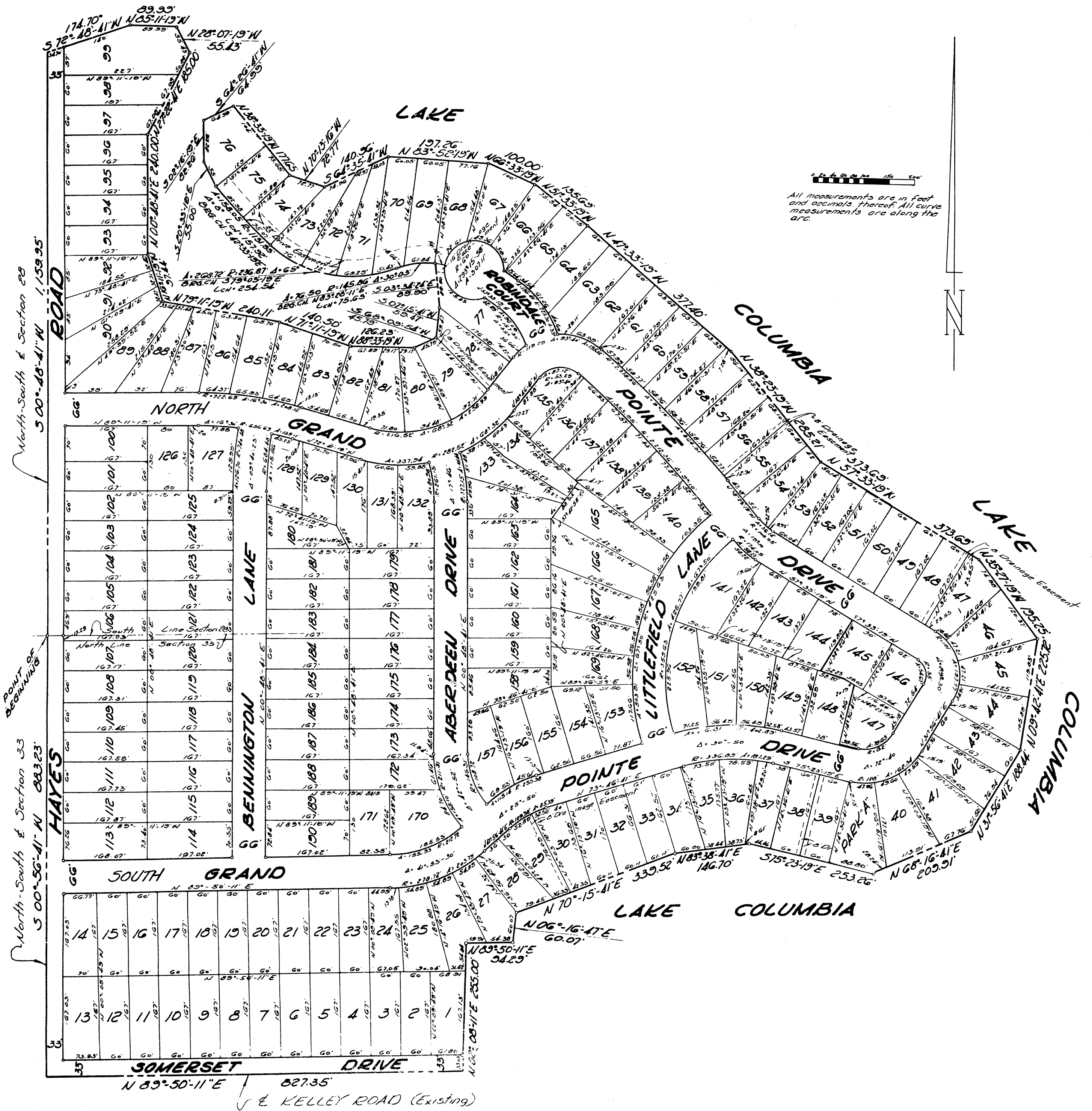


"GRAND POINTE SHORES"

BEING A SUBDIVISION PART OF THE NORTHEAST 1/4 OF SECTION 33 AND PART OF THE SOUTHEAST 1/4 OF SECTION 28, TOWN 4 SOUTH, RANGE 1 EAST, COLUMBIA TOWNSHIP, JACKSON COUNTY, MICHIGAN



All measurements are in feet and decimals thereof. All curve measurements are along the arc.