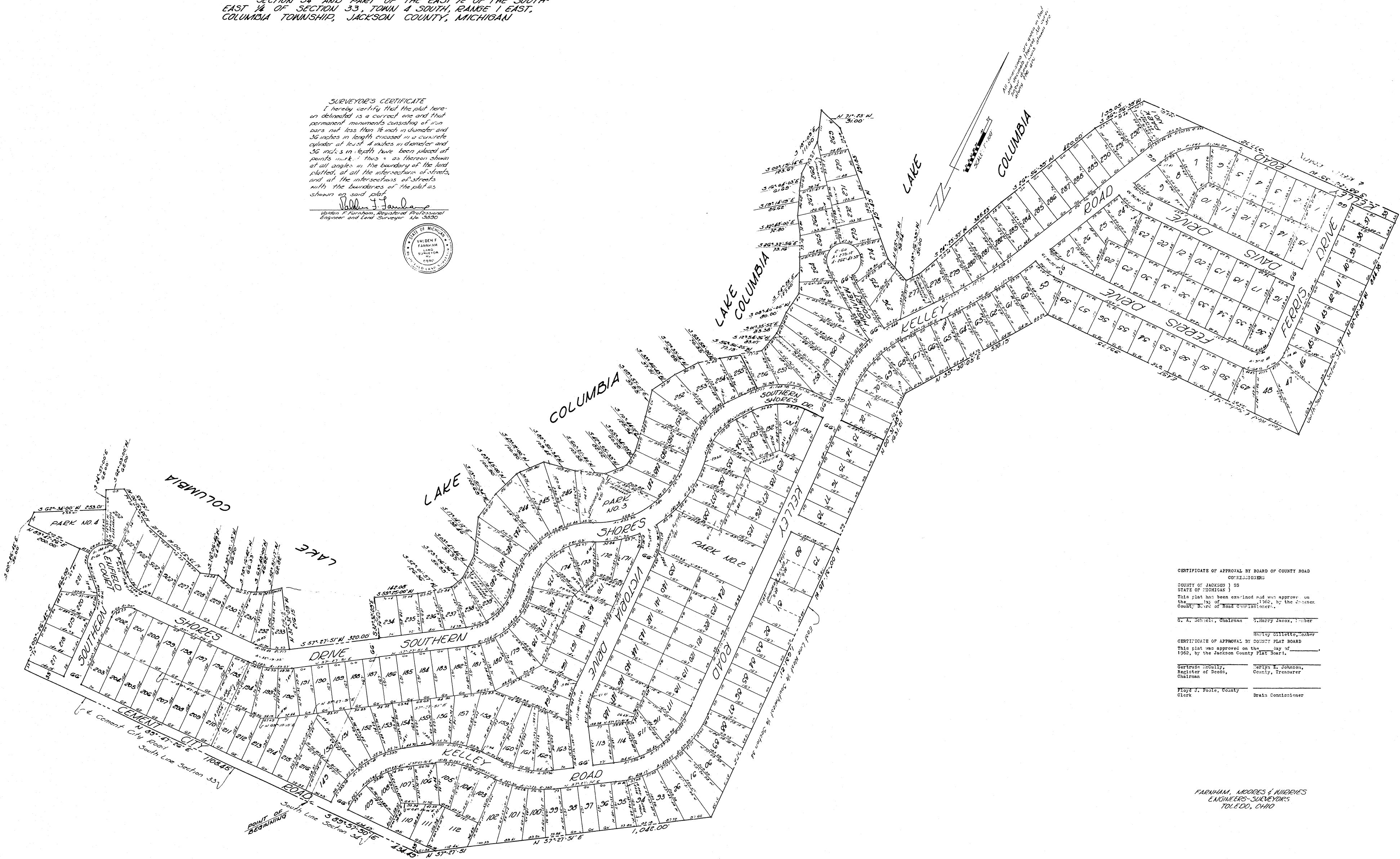


"SOUTHERN SHORES"

BEING A SUBDIVISION PART OF THE WEST 1/4 OF SECTION 34 AND PART OF THE EAST 1/4 OF THE SOUTH-EAST 1/4 OF SECTION 33, TOWN 4 SOUTH, RANGE 1 EAST, COLUMBIA TOWNSHIP, JACKSON COUNTY, MICHIGAN

SURVEYOR'S CERTIFICATE
 I hereby certify that the plat hereon delineated is a correct one and that permanent monuments consisting of iron bars not less than 1/2 inch in diameter and 36 inches in length encased in a concrete cylinder at least 4 inches in diameter and 36 inches in length have been placed at points marked thus: "as shown shown at all angles in the boundary of the land platted, at all the intersections of streets, and at the intersections of streets with the boundaries of the plat as shown on said plat.

Robert J. Farham
 Valdez Farham, Registered Professional Engineer and Land Surveyor No. 3030



CERTIFICATE OF APPROVAL BY BOARD OF COUNTY ROAD COMMISSIONERS
 COUNTY OF JACKSON }
 STATE OF MICHIGAN }
 This plat has been examined and was approved on the _____ day of _____ 1962, by the Chairman, County Board of Road Commissioners.

G. A. Scheidt, Chairman Harry Jacobs, Member
 Henry Gillette, Member

CERTIFICATE OF APPROVAL BY COUNTY PLAT BOARD
 This plat was approved on the _____ day of _____ 1962, by the Jackson County Plat Board.

Gertrude McCally, Melyn E. Johnson,
 Register of Deeds, County, Treasurer
 Chairwoman

Floyd J. Poole, County Drain Commissioner
 Clerk

FARHAM, MOORE & MIDDLES
 ENGINEERS-SURVEYORS
 TOLEDO, OHIO