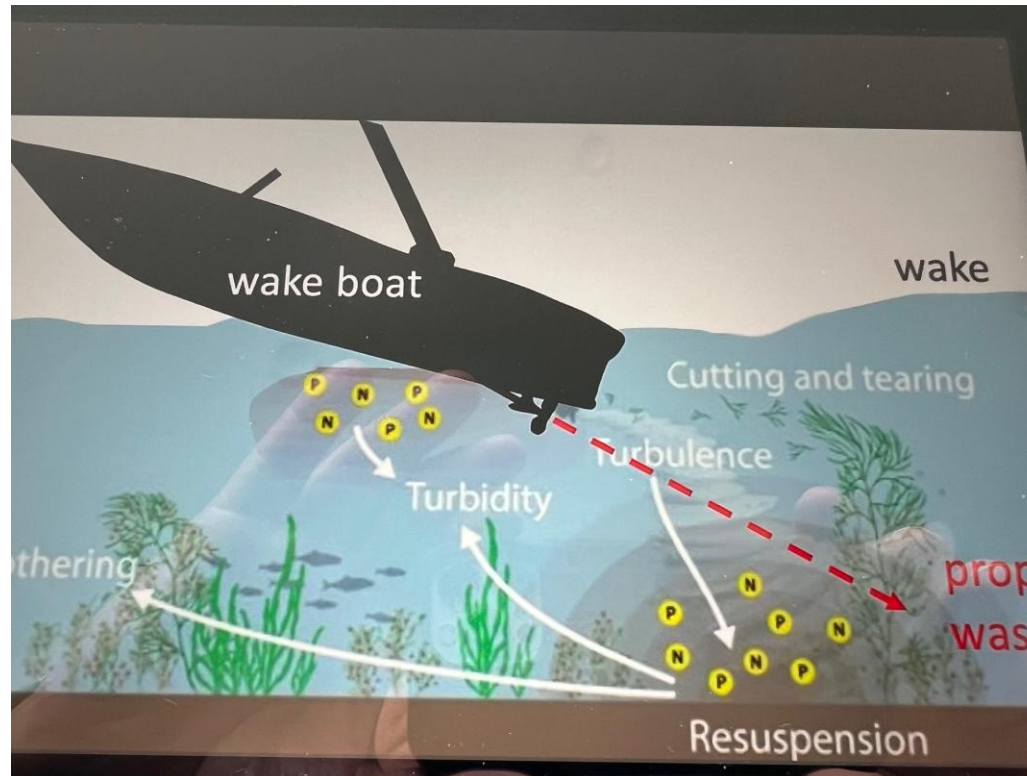


Watershed / Water Quality Team Update:

Wake boat guidelines:

Due to the designs of the Wake Surf Boats and their high horsepower engines and hull shape, the boats can disrupt the bottom of the lake up to 30 feet deep. The Dynamic wave action produced has been shown in verifiable studies to create large mud plumes, punch large holes in the bottom and re-distribute the sediments from the lake bottom. These actions create murkier water and release phosphorus and nitrogen back in to the water column and increase the growth of weeds and algae.



How Wake Boats effect
our lake

<https://youtu.be/XuUvWnlXRPo>

<https://www.youtube.com/watch?v=2OEHn0Htj8A&t=10s>

<https://www.youtube.com/watch?v=IUEGmSchkyE>

Recommended Wake Boat Operation Guidelines

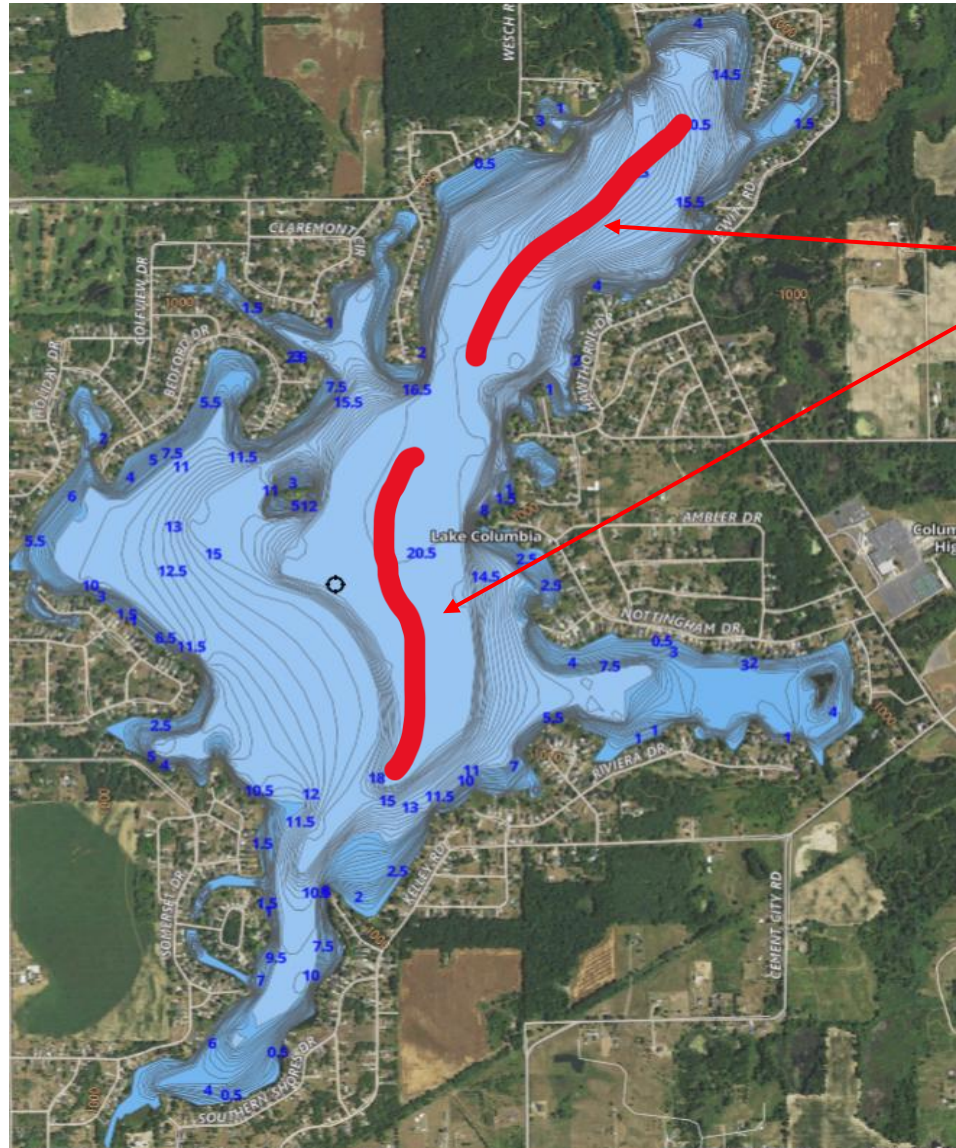
Michigan House Bill Written:

Do not operate in "Wake Mode" unless you are:

1. In at least 15' of water
2. At least 500' from any shore or dock structure
3. Make straight runs and then drop / turn around in non wake mode / run return trip

General Fact – not part of HB

All boat operators are responsible for the wake their boat produces and any potential damage or injury they may cause.



If you own a Wake Boat, and want to continue to operate in Wake Mode, please consider operation in these two red areas. Always keep an eye on your depth gage and make notes of your 500' landmarks.